

maripoc



C. difficile

GDH

Toxin A/B

Gastro

Norovirus GII.4

Norovirus GI

Rotavirus

Adenovirus

Campylobacter spp.



Follow the ESCMID guideline for CDI diagnostics with mariPOC®

All in one

IDENTIFY *C. difficile* by detecting GDH.

CONFIRM infection by detecting toxins A/B.

BROADEN target coverage with the Gastro test.

Result read-out

- ▶ 20 min positives
- ▶ 2 h low positives, negatives

One sample,
multiple results

Revolutionary test for *C. difficile* infection

The ESCMID diagnostic guideline for *C. difficile* was updated in 2016. mariPOC® CDI test was developed to meet with this guideline (see figure below). *C. difficile* and toxins A/B are detected simultaneously from one sample.

mariPOC® is automated and continuous-feed analyser. It is thus well suited for high sample volumes.

High sensitivity of the mariPOC® GDH test and high specificity of the mariPOC® toxin A/B test ensure accurate results (Table).

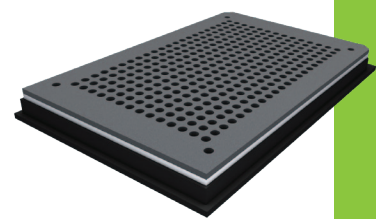
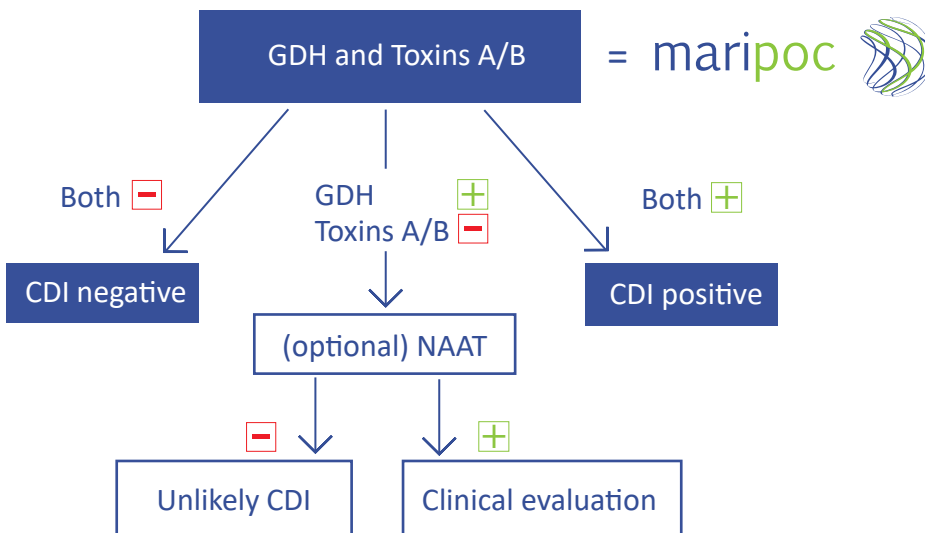
Table. Performance of mariPOC® CDI and Gastro tests.

Method	Sensitivity	Specificity	N
mariPOC® CDI test			
GDH	100%**	98,8%	188
Toxin A/B	>100%**	100%	188
mariPOC® Gastro test			
Norovirus GII.4	100%*	99.5%	428
Norovirus GI	6 ng/mL	99.5%	428
Rotavirus	100%*	99.8%	651
Adenovirus	100%*	99.5%	651
<i>Campylobacter</i> spp.	>100%* 91% (culture)	97.5%	352

*) immunochromatography

***) membrane enzyme immunoassay

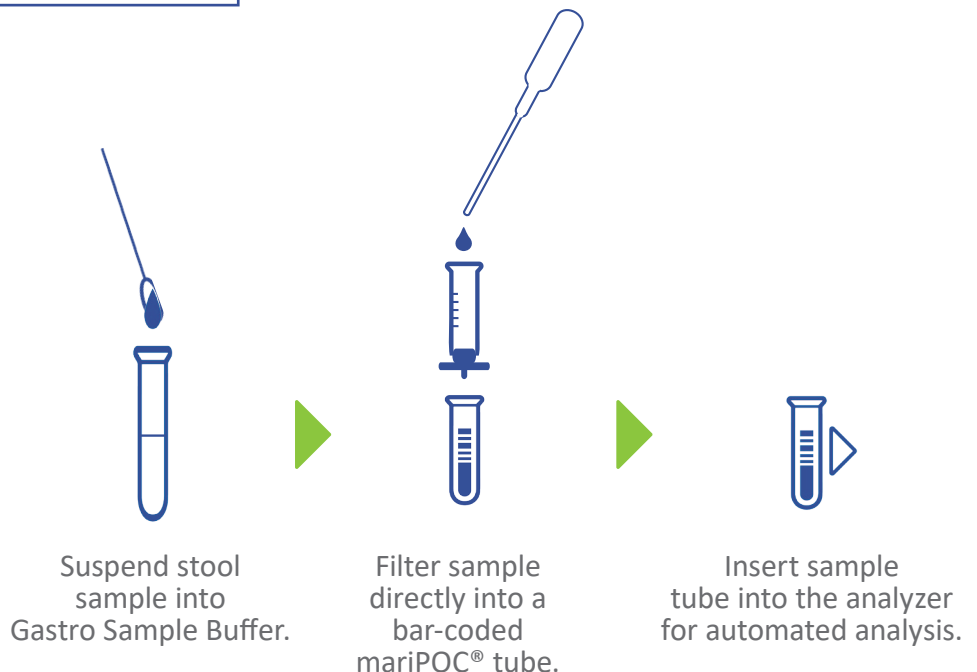
ESCMID guideline for *C. difficile* infection (CDI) diagnostics (2016)



Test plate contains 44 Gastro and 44 CDI tests.

Run Gastro and CDI test from the same sample.

Workflow



Manufactured by
ArcDia International Oy Ltd.
Lemminkäisenkatu 32
20520 Turku, Finland